

JOB NUMBER:
#????



VISION REMODELING
DESIGN - BUILD - RENOVATE
www.vision-remodeling.com

**VISION
REMODELING**
2886 MIDDLE ST.
LITTLE CANADA, MN. 55117
PHONE: 763-425-6003
FAX: 651-337-0356

SUNBERG RESIDENCE

REVISIONS

PRELIM.	5-29-07
FINAL	7-23-07
#1 REVISION	8-16-07
#2 REVISION	-
#3 REVISION	-

PAGE NUMBER:

1 OF 2

SPECIFICATIONS:

MASTER BEDROOM

FLOORING

MATERIAL-ARTISTICA TILE
STYLE/COLOR-LAGOS AZUL, 12 X 12'S, HIGH HONED
SUPPLIER-FANTASIA
GROUT-HYDROMENT #H165-TIGHT GROUT LINES
USE LATEX MODIFIED WHITE THINSET
PRODUCT MUST BE SEALED

WALLS

FINISH-BENJAMIN MOORE
COLOR-HC-159 EGGSHELL

CEILING

TYPE-FLAT
COLOR-CEILING WHITE

**MILLWORK
BASE**

MATERIAL-ARTISTICA TILE
STYLE/COLOR-LAGOS AZUL, 12 X 12'S, HIGH HONED
SUPPLIER-FANTASIA
GROUT-HYDROMENT #H165-TIGHT GROUT LINES
CUT TILES DOWN TO 12" X 4" H.
USE LATEX MODIFIED WHITE THINSET
PRODUCT MUST BE SEALED

CASING

STYLE-MATCH EXISTING RANCH CASING
MATERIAL-PAINT GRADE
FINISH-BENJAMIN MOORE #OC-45, SEMI GLOSS

LIGHTING

MANUFACTURER-ESTILUZ
STYLE-LEONARDO MARELLI 37NI
FINISH-SATIN NICKEL

**CABINETRY
CABINET**

MATERIAL-CHERRY
STYLE-SLAB DOORS
FINISH-DARK STAIN SAMPLE PROVIDED BY EMINENT

HARDWARE

MANUFACTURER-HAFELE
STYLE-103.88.901
FINISH-SILVER ANODIZED

COUNTERTOP

MATERIAL-2" CARRARA MARBLE
COLOR-WHITE CARRARA
EDGE DETAIL-EASED
BACKSPLASH-12"H. X 3/4" THICK

BACKSPLASH

MATERIAL-3/4" CARRARA MARBLE
PATTERN-12" HIGH
GROUT-NONE

SINK

MANUFACTURER-ASANA
STYLE-EFL1515
COLOR-SSS

FAUCET

MANUFACTURER-KOHLER
STYLE-PURIST K-T14415-3-BN/K-410-K-NA
FINISH-POLISHED CHROME

TOILET

MANUFACTURER-KOHLER
STYLE-CIMARRON, COMFORT HEIGHT K-3496-0, SEAT K-4664-0
COLOR-WHITE

**SHOWER
FLOOR**

MATERIAL-ARTISTICA HAMPTON BLENDS "SAG HARBOR" TILE #GLOSBSH3
PATTERN-STRAIGHT
GROUT-HYDROMENT MYST H165
MANUFACTURER-FANTASIA
USE LATEX MODIFIED WHITE THINSET
PRODUCT MUST BE SEALED

WALLS

MATERIAL-ARTISTICA-LAGOS AZUL STILO MOSAIC
PATTERN-STRAIGHT LAID HORIZONTALLY
GROUT-HYDROMENT MYST H165
MANUFACTURER-FANTASIA
SHELVES OR LONG NARROW RECESS
USE LATEX MODIFIED WHITE THINSET
PRODUCT MUST BE SEALED

DOOR

GLASS-FRAMELESS GLASS WALL NO DOOR
TRIM-NONE

FAUCET

MANUFACTURER-KOHLER
STYLE-PURIST FAUCET. (1) WATERTILE 22 NOZZLE K-8023-CP,
(2) WATERTILE 22 NOZZLE BODYSpray K-8003-CP,
(1) RAIN SHOWERHEAD K-10121-CP/K-7396-CP
FINISH-POLISHED CHROME

**ACCESSORIES
TOWEL BAR**

MANUFACTURER-BALDWIN
STYLE-LIMELIGHT (NEED TO DETERMINE SIZE)
FINISH-POLISHED CHROME

TOWEL RING

MANUFACTURER-BALDWIN
STYLE-LIMELIGHT #3574.150 (IF THERE IS ROOM)
FINISH-POLISHED CHROME

ROBE HOOK

MANUFACTURER-BALDWIN
STYLE-LIMELIGHT #3575.150
FINISH-POLISHED CHROME

TOILET PAPER HOLDER

MANUFACTURER-BALDWIN
STYLE-LIMELIGHT #3573.150
FINISH-POLISHED CHROME

MIRRORS

SIZE-45"W X 3' X 3' *NEEDS TO BE MEASURED ON SITE

ADDITIONAL NOTES

FAUCET HOLES SHOULD BE DRILLED THROUGH THE 12" BACKSPLASH
CUT 12X12 TILES DOWN TO 12X4 FOR BASE
USE LATEX MODIFIED WHITE THINSET FOR ALL TILE AND SEAL ALL TILE

JOB NUMBER:
#?????



VISION REMODELING
DESIGN - BUILD - RENOVATE
www.vision-remodeling.com

VISION REMODELING
2886 MIDDLE ST.
LITTLE CANADA, MN. 55117
PHONE: 763-425-6003
FAX: 651-337-0356

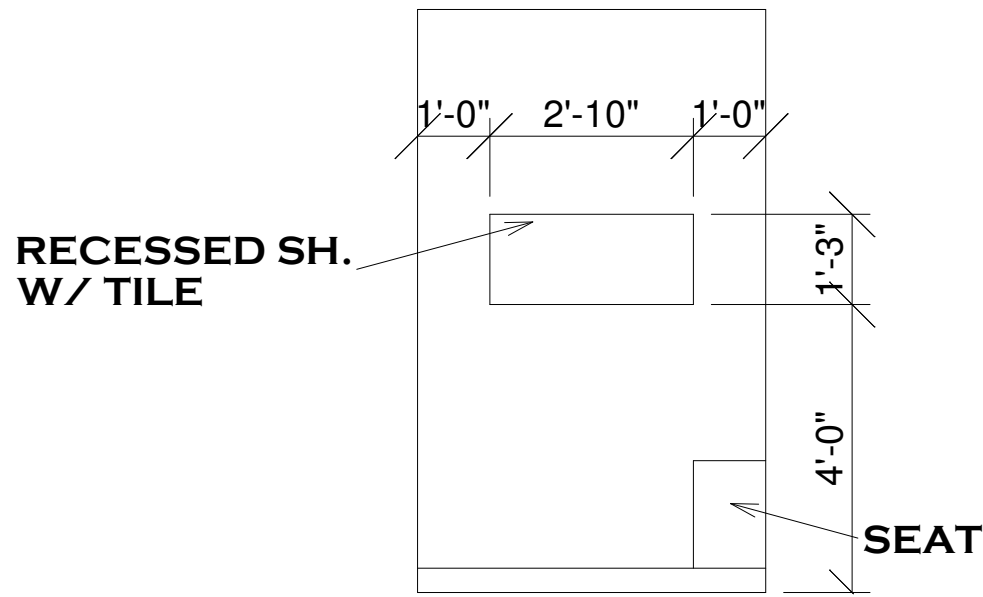
SUNBERG RESIDENCE

REVISIONS

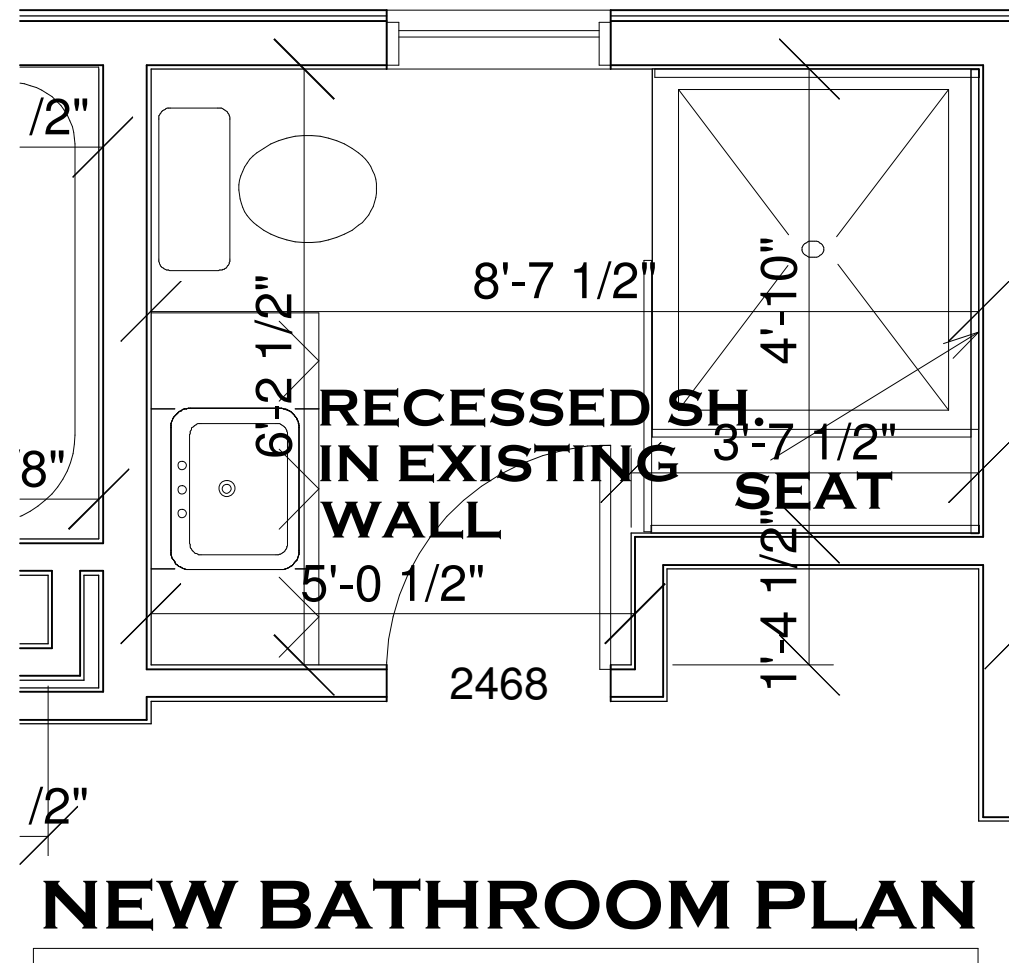
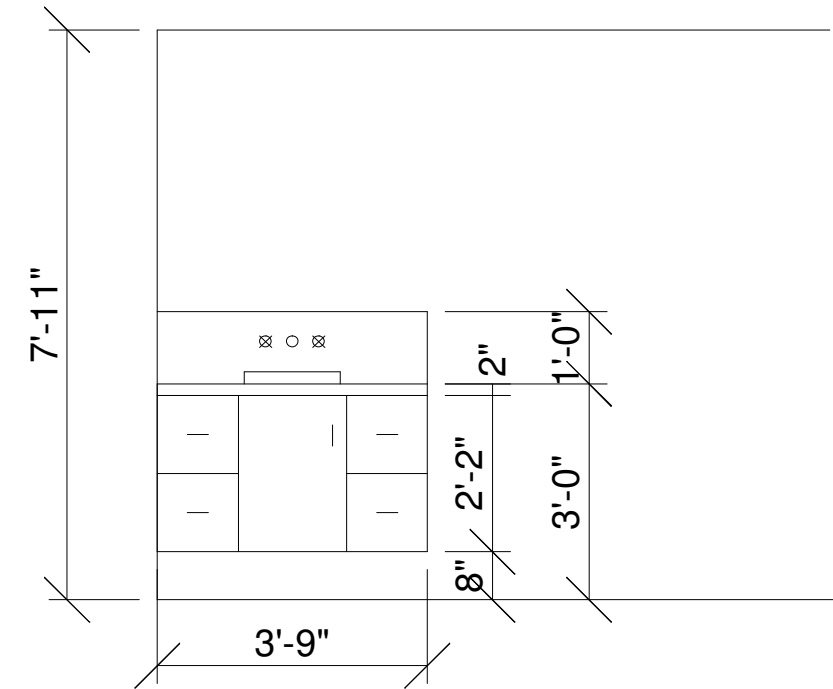
PRELIM.	5-29-07
FINAL	7-23-07
#1 REVISION	8-16-07
#2 REVISION	-
#3 REVISION	-

PAGE NUMBER:

2 OF 2

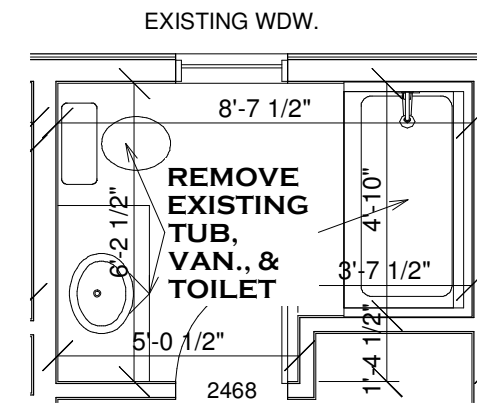


NOTES:
GUT ENTIRE BATHROOM
NEW SHEETROCK
REFINISH EXISTING DOOR
EXISTING WDW.



NEW BATHROOM PLAN

SCALE: 3/8" = 1'-0"



EXISTING BATHROOM PLAN